

Coral Shores High School Cosmetology Alterations

PREPARED FOR
Monroe County School District
 241 Trumbo Road
 Key West, Florida 33040



SCHOOL BOARD MEMBERS
 District 1 - Bobby Highsmith
 District 2 - Andy Griffiths, Vice Chair
 District 3 - Mindy Conn
 District 4 - John Dick, Chair
 District 5 - Dr. Sue Woltanski

SUPERINTENDENT OF SCHOOLS
 Theresa Axford

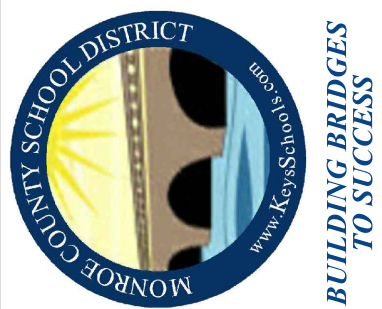
PREPARED BY
AGI Anston-Greenlees, Inc.
 Mechanical & Electrical Consulting Engineers
 1315 West Fletcher Avenue, Tampa, FL 33612 Tel(813)963-1919
 Email: AGI@agi-engineers.com HTTP://www.agi-engineers.com
 Florida Engineering Business Number 6093

April 18, 2022
 CONSTRUCTION DOCUMENTS

DRAWING INDEX

NUMBER	TITLE
-	COVER SHEET
P0.1	PLUMBING GENERAL NOTES, SCHEDULE, AND LEGEND
P1.1	AREA F2 2ND FLR PLUMBING PLANS, DETAILS, AND RISERS
E0.1	ELECTRICAL GENERAL NOTES & LEGEND
E1.1	POWER AND SYSTEMS DEMOLITION PLAN - UNIT F2
E2.1	ELECTRICAL PLAN - UNIT B2
E3.1	PARTIAL ELECTRICAL RISER DIAGRAM AND PANEL SCHEDULES

Coral Shores High School
 Cosmetology Alterations
 Monroe County School District
 241 Trumbo Road, Key West, Florida 33040



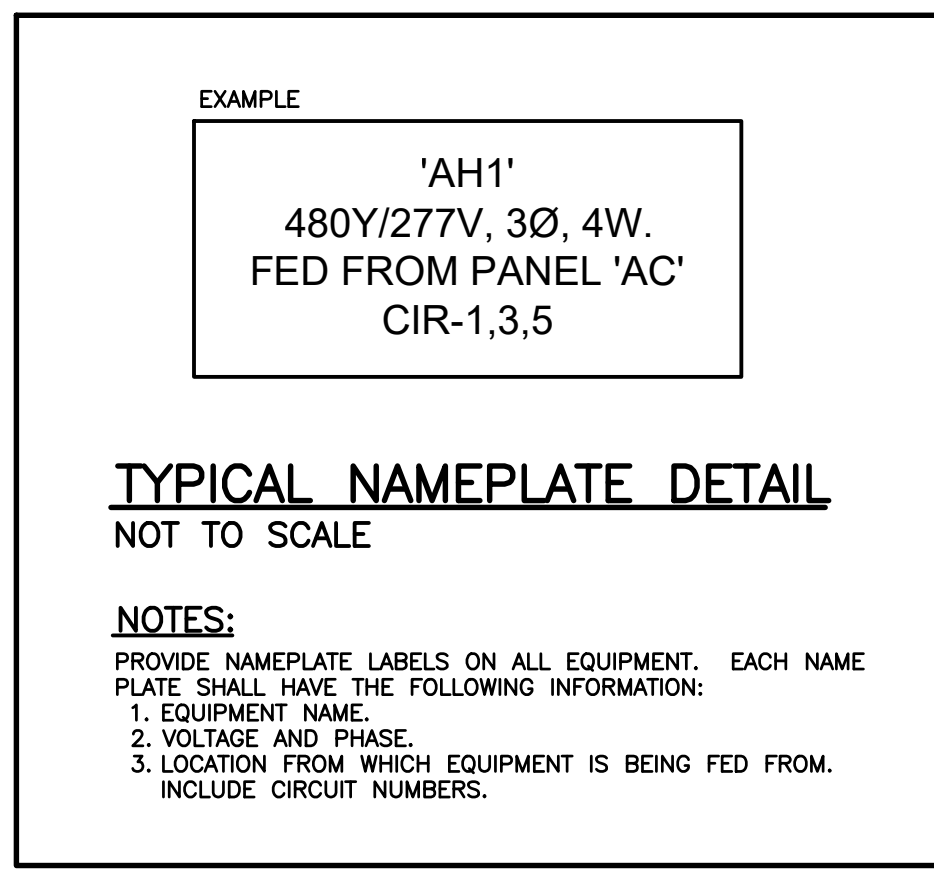
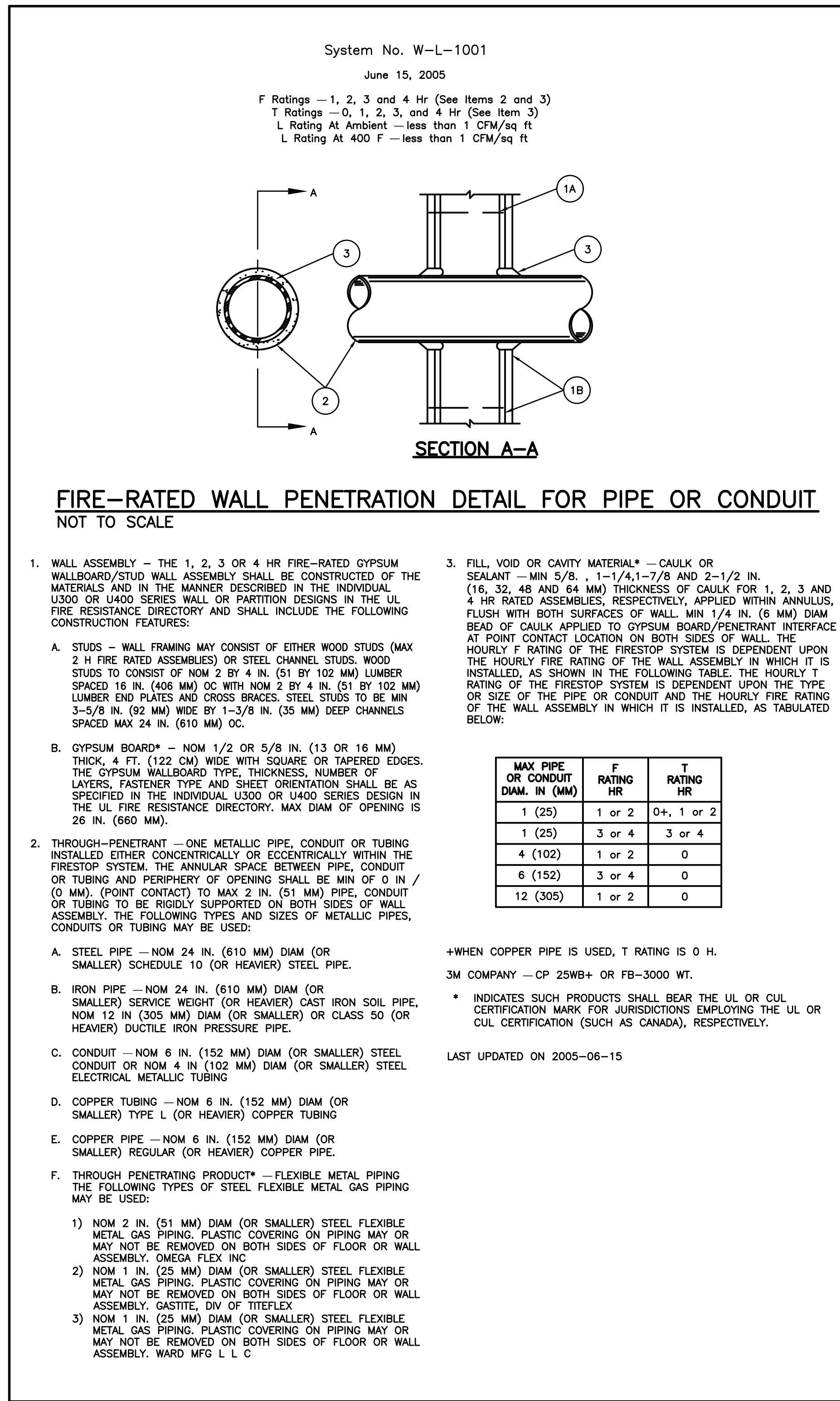
AGI Anston-Greenlees, Inc.
 Mechanical & Electrical Consulting Engineers
 1315 West Fletcher Avenue, Tampa, FL 33612 Tel(813)963-1919
 Email: AGI@agi-engineers.com HTTP://www.agi-engineers.com
 Florida Engineering Business Number 6093



LOCATION OF SITE

DATE
 04.18.2022

JOB NO.
 21027



ELECTRICAL LEGEND		
SYMBOL	DESCRIPTION	MOUNTING
	BRANCH CIRCUIT CONDUIT AND WIRE CONCEALED ABOVE CEILING OR BEHIND FINISHED WALL	N/A
	BRANCH CIRCUIT CONDUIT AND WIRE CONCEALED BELOW FINISHED FLOOR OR UNDERGROUND.	N/A
	RACEWAY EXPOSED ON WALL OR CEILING	N/A
	HOMERUN TO PANELBOARD - LETTER INDICATES PANEL NUMBER INDICATES CIRCUIT, MINIMUM 3/4" CONDUIT. NOTE: ANY HOMERUN WITHOUT FURTHER DESIGNATION INDICATES TWO #12 AWG AND #12 AWG EQUIPMENT GROUND. PC OUTLET REQUIRES SEPARATE NEUTRAL, MIN. #10 AWG. DEDICATED CIRCUIT REQUIRES SEPARATE NEUTRAL.	N/A
	RACEWAY RISER, UP OR DOWN AS NOTED	N/A
	CONDUIT CAPPED	N/A
	DUPLX RECEPTACLE - 120VAC. LETTER NEXT TO DEVICE INDICATES THE FOLLOWING: 'WP' = WEATHERPROOF TYPE (IN USE TYPE). 'GFI' = GROUND FAULT PROTECTION TYPE. 'DL' = DAMP LOCATION WEATHERPROOF COVER (NOT IN USE TYPE). 'TP' = TAMPER PROOF.	M.H. 16" AFF TO BOTTOM
	DUPLX RECEPTACLE - 120VAC F = PEDestal MOUNTED	M.H. 16" AFF TO BOTTOM
	DOUBLE DUPLX RECEPTACLE - 120VAC	M.H. 16" AFF TO BOTTOM
	DOUBLE DUPLX RECEPTACLE - 120VAC	M.H. 42" AFF TO BOTTOM OR AS NOTED
	SPECIAL PURPOSE RECEPTACLE AS NOTED	M.H. 42" AFF TO BOTTOM
	JUNCTION BOX OR OUTLET BOX, 4" SQUARE BOX UNLESS OTHERWISE NOTED	AS NOTED
	JUNCTION BOX OR OUTLET BOX, 4" SQUARE BOX UNLESS OTHERWISE NOTED	WALL MOUNTED
	PAGING SPEAKER	CEILING MOUNTED
	CAT 6 COMMUNICATIONS OUTLET WITH CAT. 6 CABLING, JACK AND PLASTIC FOG-WHITE FACEPLATE, NUMBER INDICATES # OF PORTS AND CABLING REQUIRED, 1-1/4" CONDUIT W/BUSHING STUBBED INTO CEILING SPACE. ROUTE CABLING TO NEAREST IDF RACK.	M.H. 16" AFF TO BOTTOM OR AS NOTED
	WIRELESS ACCESS POINT COMMUNICATIONS OUTLET WITH TWO (2) CAT. 6A CABLES, JACKS AND PLASTIC FOG-WHITE FACEPLATE, 1-1/4" CONDUIT W/BUSHING STUBBED INTO CEILING SPACE. ROUTE CABLING TO NEAREST IDF RACK.	WALL MOUNTED AT 84" AFF OR 12" BELOW CEILING, WHICHEVER IS LOWER
	120/208 VOLT POWER PANELBOARD	M.H. 6"-0" TO TOP OR AS NOTED
	277/480 VOLT POWER PANELBOARD	M.H. 6"-0" TO TOP OR AS NOTED
	NON-FUSIBLE SWITCH	M.H. 6"-0" TO TOP OR AS NOTED
	FUSIBLE SAFETY SWITCH	M.H. 6"-0" TO TOP OR AS NOTED
	FIRE ALARM STROBE XX = CANDELA RATING, MINIMUM 75 CANDELA U.O.N.	TOP 6" BELOW CEILING OR 80" TO BOTTOM OF LENS A.F.F. WHICHEVER IS LOWER
	FIRE ALARM COMBINATION HORN/STROBE, LETTER IN CIRCLE INDICATES TYPE: C=CHIME, B=BELL, H=HORN, S=SPEAKER XX = CANDELA RATING, MINIMUM 75 CANDELA U.O.N. YY = SPEAKER WATTAGE, MINIMUM 1/2 WATT U.O.N.	TOP 6" BELOW CEILING OR 80" TO BOTTOM OF LENS A.F.F. WHICHEVER IS LOWER
	FIRE ALARM MANUAL PULL STATION	M.H. 48" AFF TO TOP
	FIRE ALARM REMOTE INDICATOR	M.H. 48" AFF TO TOP
	FIRE ALARM SMOKE DETECTOR	CEILING MOUNTED
	FIRE ALARM DUCT MOUNTED SMOKE DETECTOR	DUCT MOUNTED (SEE MECHANICAL DWGS.)
	FIRE ALARM HEAT DETECTOR	CEILING MOUNTED

THIS IS A STANDARD LEGEND. NOT ALL DEVICES SHOWN ARE USED IN THESE DOCUMENTS.

ABBREVIATIONS:			
AFF	ABOVE FINISHED FLOOR	INT	INTERCOM/PAGING CABINET
AFG	ABOVE FINISHED GRADE	MTG	MOUNTING
E	EXISTING	MTD	MOUNTED
ETR	EXISTING TO REMAIN	M.H.	MOUNTING HEIGHT
EWC	ELECTRIC WATER COOLER	N/A	NOT APPLICABLE
EWB	ELECTRIC WATER HEATER	PROJ	PROJECTOR LOCATION
EG	EQUIPMENT GROUND	U.O.N.	UNLESS OTHERWISE NOTED
ESB	ENERGY SAVING BALLAST	R	REMOVE
EXP	EXPLOSION PROOF	RL	RELOCATED
FACP	FIRE ALARM CONTROL PANEL	WP	WEATHER PROOF
FATC	FIRE ALARM TERMINAL CABINET	OFCI	OWNER FURNISHED, CONTRACTOR INSTALLED
GFI	GROUND FAULT PROTECTION	CFCI	CONTRACTOR FURNISHED, CONTRACTOR INSTALLED
G, GND	GROUND		
GWB	GYPSUM WALL BOARD	OFOW	OWNER FURNISHED, OWNER INSTALLED
H.D.	HAND DRYER		

- ELECTRICAL GENERAL NOTES:**
 (THESE NOTES APPLY TO ALL SHEETS)
- ALL ELECTRICAL WORK SHALL MEET ALL OF THE REQUIREMENTS OF THE FOLLOWING:
 - FLORIDA BUILDING CODE (FBC) 7TH EDITION (2020); THIS CODE INCLUDES THE 2020 FBC BUILDING, MECHANICAL, PLUMBING, ENERGY CONSERVATION, FUEL GAS, ACCESSIBILITY, AND TEST PROTOCOLS VOLUMES. FURTHER, SEE "REFERENCED STANDARDS" IN THE FBC BUILDING CHAPTER 35; FBC MECHANICAL CHAPTER 15; FBC PLUMBING CHAPTER 14; FBC ENERGY CONSERVATION CHAPTER 6; AND FBC FUEL GAS CHAPTER 8) (EFFECTIVE DECEMBER 31, 2020).
 - 7TH EDITION OF THE FLORIDA FIRE PREVENTION CODE (FFPC); (THIS CODE ALSO INCLUDES THE FLORIDA VERSIONS OF NFPA 1 AND NFPA 101.) (EFFECTIVE DECEMBER 31, 2020).
 - 2017 NATIONAL ELECTRIC CODE.
 - 2014 STATE REQUIREMENTS FOR EDUCATIONAL FACILITIES (SREF); - (EFFECTIVE NOVEMBER 4, 2014)
 - IT IS THE CONTRACTOR'S RESPONSIBILITY TO VISIT THE SITE AND VERIFY THE EXISTING CONDITIONS TO GAIN KNOWLEDGE OF THE SCOPE OF WORK INVOLVED.
 - "PROVIDE" SHALL MEAN "FURNISH AND INSTALL".
 - IN GENERAL, THESE DRAWINGS ARE SCHEMATIC IN NATURE AND SHOULD NOT BE SCALED. IT SHALL NOT BE THE INTENT OF THESE PLANS AND/OR SPECIFICATIONS TO SHOW EVERY MINOR DETAIL OF CONSTRUCTION. PROVIDE ALL ITEMS NECESSARY FOR A COMPLETE AND OPERATIONAL SYSTEM.
 - ELECTRICAL INSTALLATION SHALL BE CLOSELY COORDINATED WITH ALL OTHER TRADES. REVIEW THE ENTIRE SET OF DOCUMENTS FOR COORDINATION. NO COST SHALL BE ASSOCIATED WITH ILL-TIMED INSTALLATION INCLUDING ANY REPAIRS OR REPLACEMENTS.
 - ALL CONDUITS AND BOXES SHALL BE CONCEALED UNLESS OTHERWISE NOTED. ALL CONDUIT RUNS ARE SCHEMATIC IN NATURE. EXACT ROUTING TO BE DETERMINED IN THE FIELD UNLESS OTHERWISE NOTED.
 - APPLY A BITUMASTIC COATING FOR ALL CONDUITS PENETRATING FLOOR SLABS FROM BELOW GRADE.
 - PROVIDE ALL REQUIRED PULL BOXES, JUNCTION BOXES, ETC. FOR A COMPLETE INSTALLATION.
 - PATCH, REPAIR AND REPAINT ALL WALLS THAT HAVE BEEN DAMAGED DUE TO ELECTRICAL ROUGH-IN. REMOVE ANY UNUSED CONDUIT AND WIRE.
 - PROVIDE FIRE-STOPPING AT ALL FIRE WALL PENETRATIONS. USE A U.L. APPROVED SYSTEM LISTED FOR THE ASSOCIATED INSTALLATION.
 - ALL CONDUCTORS SHALL BE STRANDED COPPER, THHN/THWN, MINIMUM #12 AWG. ALL CONDUCTORS SHALL BE IN CONDUIT. FLEXIBLE CONDUIT SHALL BE LIMITED TO A MAXIMUM OF 6'-0" IN LENGTH.
 - MC CABLE OR OTHER PREMANUFACTURED CABLING SHALL NOT BE USED UNLESS APPROVED BY THE OWNER AND ENGINEER.
 - ALL CIRCUITS SHALL CONTAIN A SEPARATE, GREEN, COPPER GROUNDING CONDUCTOR.
 - ALL RECEPTACLES SHALL HAVE A GROUND TERMINAL.
 - WHEN REUSING OR EXTENDING EXISTING CIRCUITS, VERIFY ALL CIRCUIT NUMBERS AND VERIFY ANY EXISTING LOAD. CIRCUITS MAY BE PICKED UP AT AN EXISTING JUNCTION BOX IF AVAILABLE RATHER THAN PROVIDING A SEPARATE HOMERUN TO A PANEL.
 - THE COLOR OF ALL RECEPTACLES, TOGGLE SWITCHES AND COVERPLATES SHALL BE VERIFIED WITH THE ARCHITECT PRIOR TO ORDERING.
 - PANELBOARDS SHALL BE ACCURATELY LABELED TO IDENTIFY FINAL CIRCUIT NUMBERS UTILIZED, THEIR LOAD AND LOCATION.
 - BRANCH CIRCUIT SHALL NOT BE RUN UNDERGROUND UNLESS SPECIFIED OR APPROVED BY THE OWNER AND ENGINEER. ROUTE CONCEALED IN WALL AND ABOVE CEILINGS. DISTRIBUTION FEEDERS FROM THE MAIN SWITCHBOARD MAY BE RUN UNDERGROUND.
 - PROVIDE FIRE RETARDANT U.L. APPROVED SEALANT ON ALL PENETRATIONS OF FIRE RATED PARTITIONS, WALLS AND STRUCTURAL SLABS. IT SHALL BE THE RESPONSIBILITY OF THE CONTRACTOR TO VERIFY, PRIOR TO SUBMITTING BID, LOCATIONS OF ALL SUCH FIRE RATED PARTITIONS, WALL AND STRUCTURAL SLABS.
 - PROVIDE HANDLE TIES FOR 2 OR MORE SINGLE POLE WITH SHARED NEUTRALS TO COMPLY WITH NEC 210.4 (B)

ELECTRICAL DRAWING INDEX

E0.1	ELECTRICAL GENERAL NOTES & LEGEND
E1.1	POWER AND SYSTEMS DEMOLITION PLAN - UNIT F2
E2.1	ELECTRICAL PLAN - UNIT B2
E3.1	PARTIAL ELECTRICAL RISER DIAGRAM AND PANEL SCHEDULES

REVISIONS	DATE

Coral Shores High School
Cosmetology Alterations

Monroe County School District
241 Trumbo Road - Key West, Florida 33040

BUILDING BRIDGES
TO SUCCESS

ELECTRICAL GENERAL NOTES & LEGEND

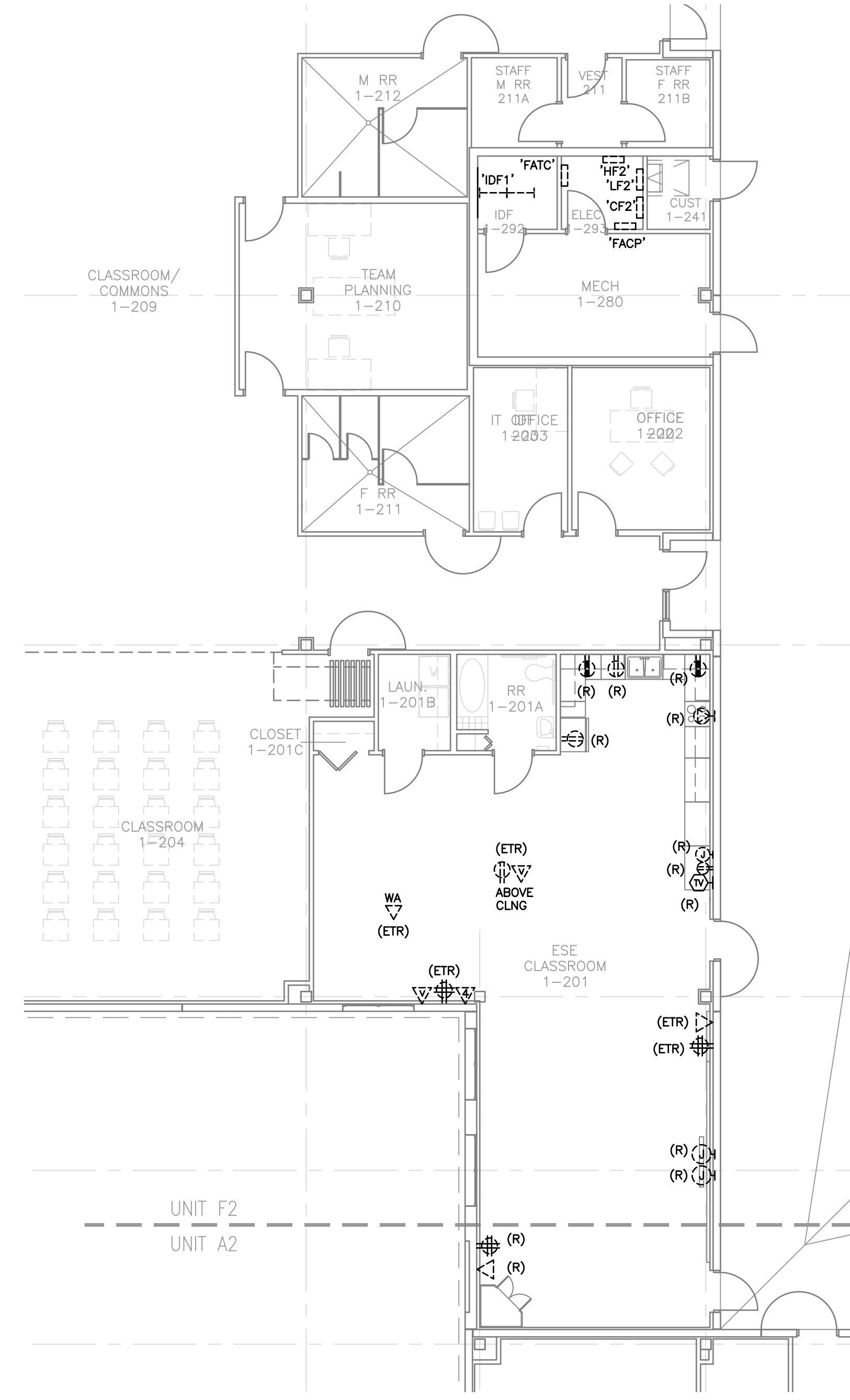
Anston-Greenlee, Inc.
Mechanical & Electrical Consulting Engineers
1115 West Hickory Avenue, Tampa, FL 33612 (813) 986-9399
www.anston-greenlee.com
Florida Engineering License Number 9808

AGI

DRAWN	TRG
CHECKED	RCA
DATE	04.18.2022
SCALE	AS NOTED
JOB NO.	21027
DRAWING NO.	E0.1

GENERAL DEMOLITION NOTES:

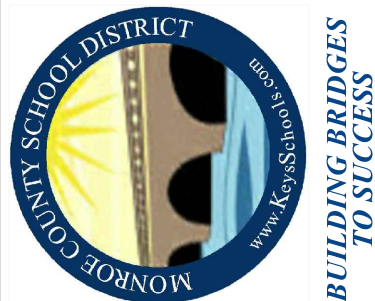
1. DASHED FIXTURES/DEVICES INDICATE EXISTING.
2. FIXTURES/DEVICES INDICATED WITH (R) ARE TO BE REMOVED. ALL OTHER FIXTURES/DEVICES ARE EXISTING TO REMAIN.
3. PROVIDE ALL REQUIRED DEMOLITION ASSOCIATED WITH THE NEW WORK AND REMOVE ALL EQUIPMENT, RACEWAYS, BOXES, WIRING, ETC. THAT IS RENDERED OUT OF SERVICE OR OBSOLETE. UPDATE PANEL CIRCUIT DIRECTORIES.
4. SPLICE AND EXTEND CIRCUITS AS NECESSARY TO MAINTAIN CIRCUIT CONTINUITY TO EXISTING LUMINAIRES, RECEPTACLES, EQUIPMENT AND OTHER DEVICES WHICH ARE TO REMAIN. DO NOT SPLICE TELEPHONE OR DATA CIRCUITS.
5. EXISTING JUNCTION BOXES WHICH ARE NOT BEING REUSED SHALL BE REMOVED AND THE WALLS OR CEILINGS SHALL BE PATCHED AND PAINTED TO MATCH THE SURROUNDING AREA.



POWER AND SYSTEMS DEMOLITION PLAN – UNIT F2
SCALE: 1/4"=1'-0"

REVISIONS	DATE

Coral Shores High School
Cosmetology Alterations
Monroe County School District
 241 Trumbo Road • Key West, Florida 33040



BUILDING BRIDGES
TO SUCCESS

POWER AND SYSTEMS DEMOLITION PLAN –
UNIT F2

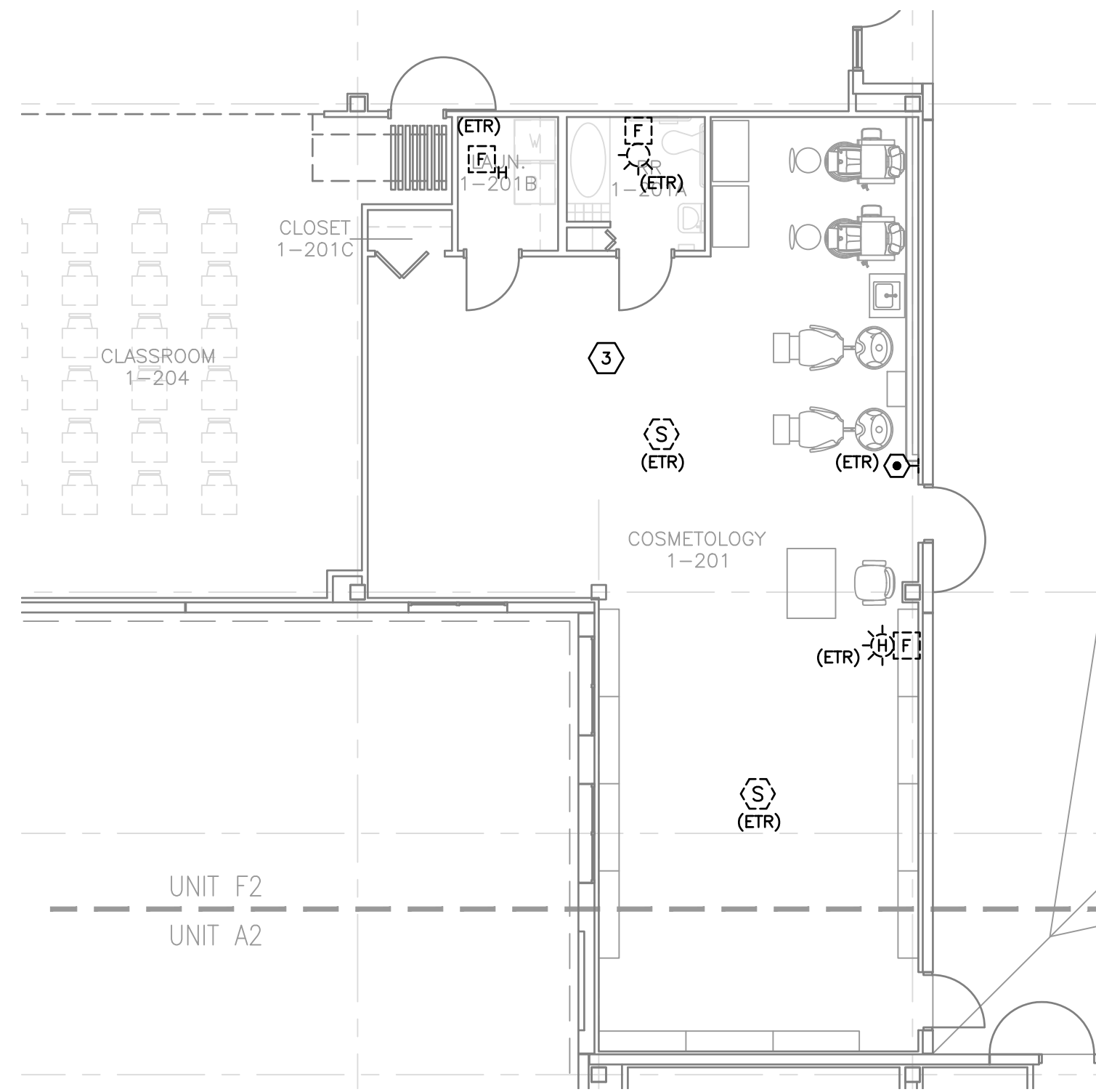
AGI
Anston-Greenlees, Inc.
 Mechanical & Electrical Consulting Engineers
1115 West Hickory Avenue, Tampa, FL 33612 784.706.9339
 License: Professional Engineer, License Number 4893

DRAWN	TRG
CHECKED	RCA
DATE	04.18.2022
SCALE	AS NOTED
JOB NO.	21027
DRAWING NO.	E1.1

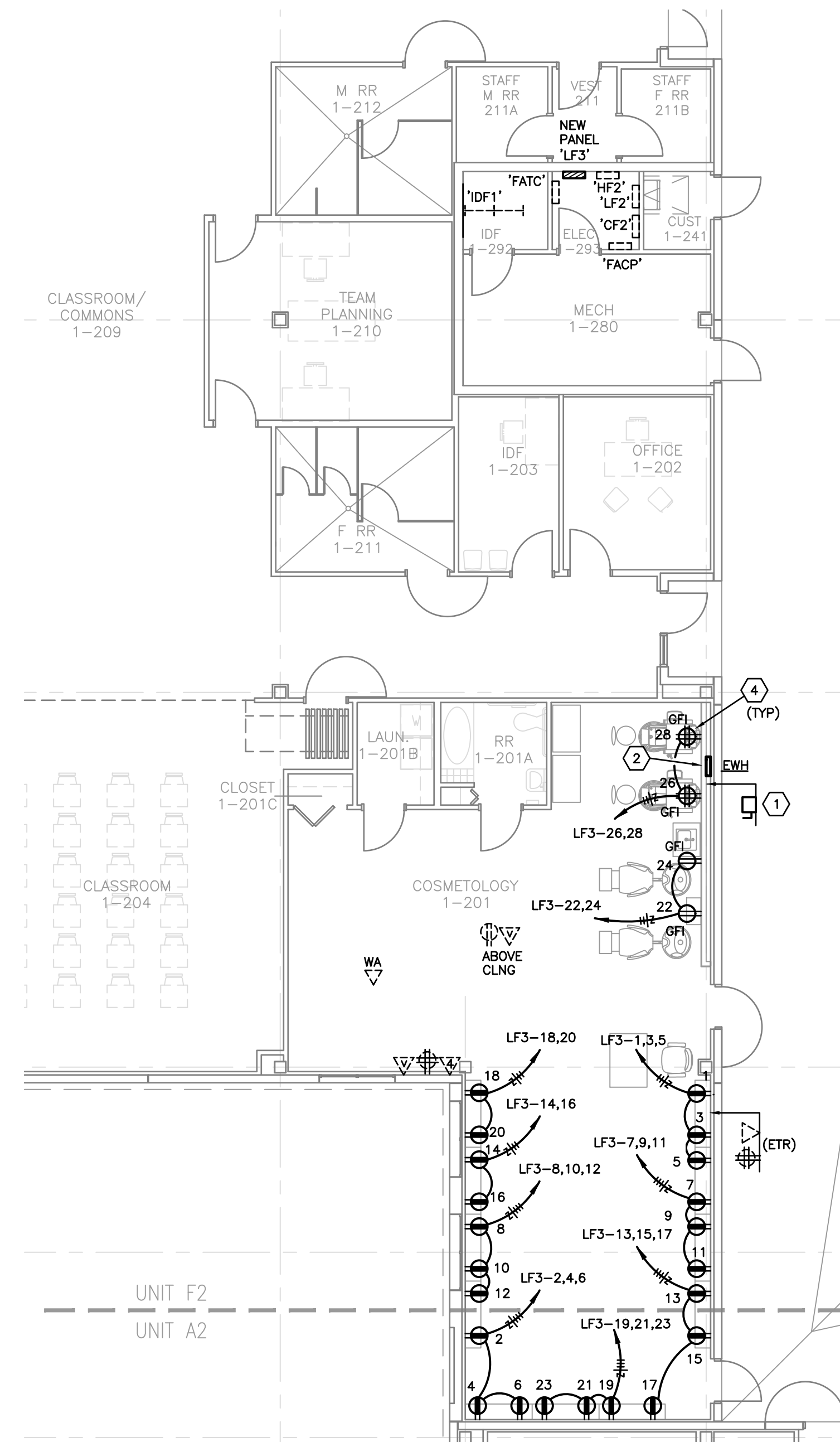
ROBERT C. ANSTON, P.E. 40858
TO THE BEST OF MY KNOWLEDGE, THESE
 DRAWINGS AND THE PROJECT MANUAL ARE
 COMPLETE AND COMPLY WITH THE 2020 FLORIDA
 BUILDING CODE

Drawing File: I:\21xxx\21027\001\21027etx.dwg E11
 Plotted by: chris Apr 16, 2022 - 8:40am

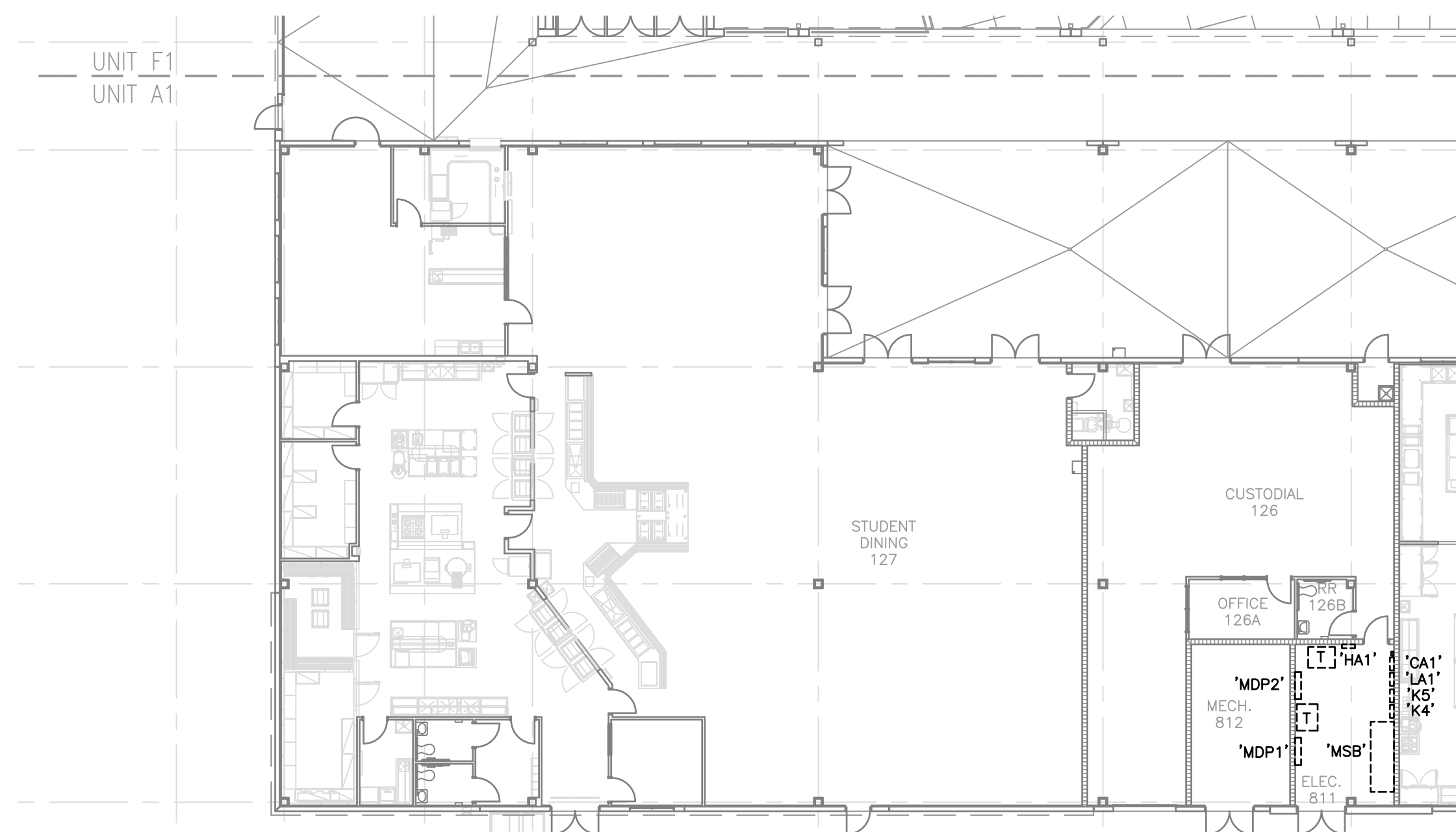
MECHANICAL EQUIPMENT CONNECTION SCHEDULE															
MARK	ROOM NUMBER	VOLTAGE/PHASE	KW	HP	FLA	MCA	BREAKER	HOMERUN CIRCUIT	CONDUIT & CABLING	COMBINATION STARTER/DISCONNECT SWITCH					INTERLOCK/REMARKS
										SIZE AMPS	POLES	FUSE	STARTER SIZE	NEMA RATING	
TANKLESS POINT OF USE ELECTRIC WATER HEATER															
EWH	COSMETOLOGY	208/1	17.5	-	84.0	84.0	100	LF3-25,27	1-1/4" C.; 2-#3, 1-#8 GND.	100	2	NF	-	1	HEAVY DUTY TYPE
MFS = MANUFACTURER'S RECOMMENDED FUSE SIZE						NF = NON-FUSED									
MRS = MOTOR RATED TOGGLE SWITCH BY DIVISION 26						DIV23 = DISCONNECTING MEANS PROVIDED BY THE MANUFACTURER OR DIVISION 23 CONTRACTOR									
VFD = VARIABLE FREQUENCY DRIVE (BY DIVISION 23) INSTALLED BY DIVISION 26															



FIRE ALARM AND INTERCOM SYSTEMS PLAN – UNIT F2
SCALE: 1/8"=1'-0"



POWER AND SYSTEMS PLAN – UNIT F2
SCALE: 1/8"=1'-0"



POWER AND SYSTEMS PLAN – UNIT A1
SCALE: 1/16"=1'-0"

DRAWING NOTES:

- 1 MOUNT DISCONNECT FOR TANKLESS WATER HEATER ABOVE CEILING DIRECTLY ABOVE EWH.
- 2 PROVIDE SIGNAGE THAT STATES 'DISCONNECT FOR WATER HEATER LOCATED ABOVE CEILING'.
- 3 PROTECT ALL EXISTING LOW VOLTAGE SYSTEMS THAT ARE TO REMAIN AND MAINTAIN OPERATION.
- 4 ALL RECEPTACLES SHALL BE 120 VOLT, 20 AMP RATED TYPE (NO 15 AMP), TYPICAL.

REVISIONS	DATE

Coral Shores High School
Cosmetology Alterations
Monroe County School District
 241 Trumbo Road - Key West, Florida 33040

BUILDING BRIDGES
TO SUCCESS

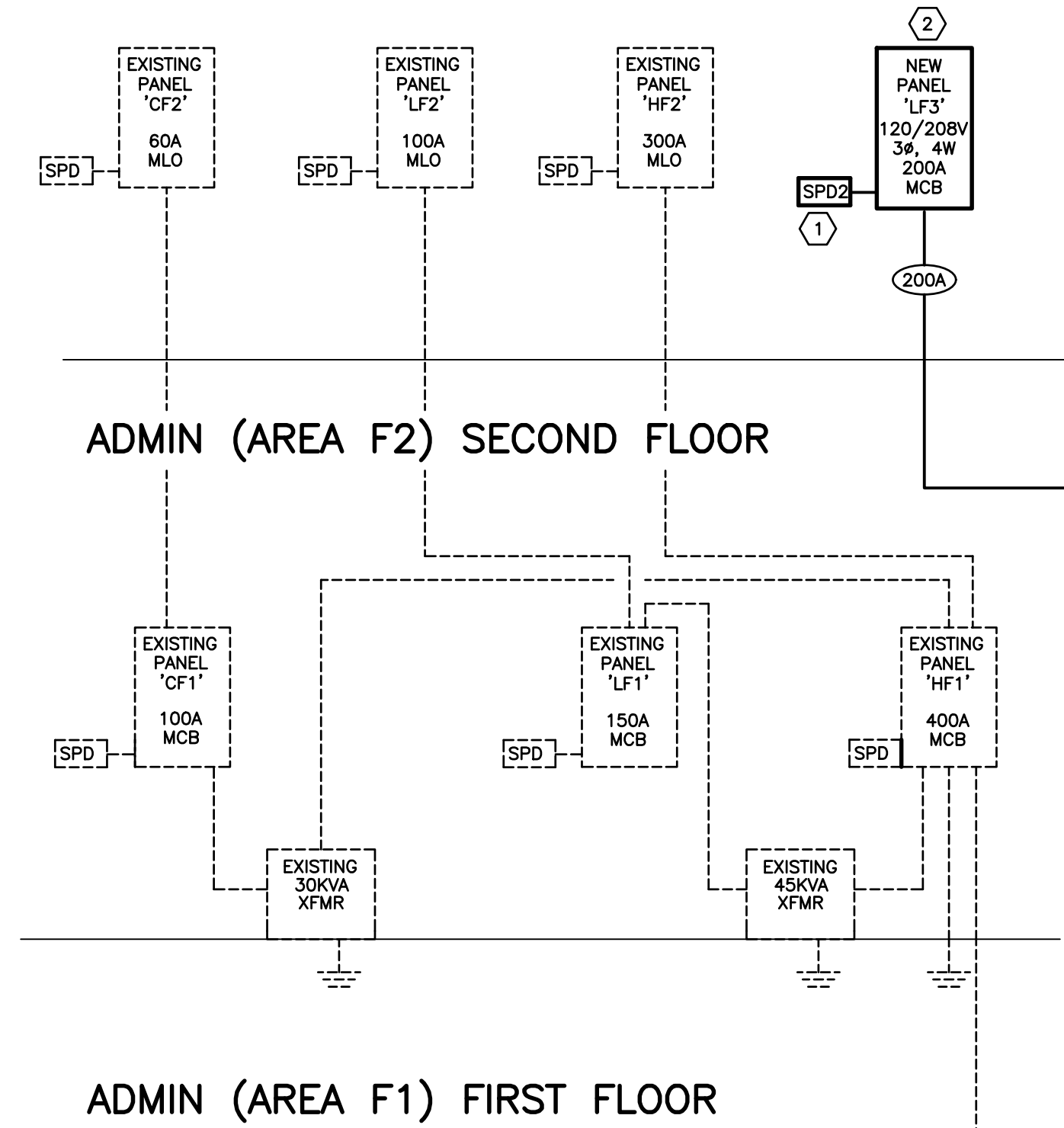
ELECTRICAL PLAN – UNIT B2

AGI
 Anston-Greenlees, Inc.
 Mechanical & Electrical Consulting Engineers
 1115 West Hickory Avenue, Tampa, FL 33612 (813) 966-9399
 License: Professional Engineer, License Number 8093

DRAWN	TRG
CHECKED	RCA
DATE	04.18.2022
SCALE	AS NOTED
JOB NO.	21027
DRAWING NO.	E2.1

ROBERT C. ANSTON, P.E. 40858
 TO THE BEST OF MY KNOWLEDGE, THESE
 DRAWINGS AND THE PROJECT MANUAL ARE
 COMPLETE AND COMPLY WITH THE 2020 FLORIDA
 BUILDING CODE

FEEDER SCHEDULE	
AMPS	CONDUIT & CABLING
200A	2" C: 3-#3/0 KCMIL, 1-#3/0 KCMIL NEUTRAL, 1-#6 GROUND



NEW PANEL 'LF3'

PANEL: LF3 AIC RATING: 10,000 AMPS SERVICE: 120/208 V., 3PH,4W												MLO: 0 AMPS MCB: 200 AMPS		
DESCRIPTION	KVA	BKR	CKT	A	B	C	CKT	BKR	KVA	DESCRIPTION				
REC: COSMETOLOGY	1	20	1				2	20	1	REC: COSMETOLOGY				
REC: COSMETOLOGY	1	20	3				4	20	1	REC: COSMETOLOGY				
REC: COSMETOLOGY	1	20	5				6	20	1	REC: COSMETOLOGY				
REC: COSMETOLOGY	1	20	7				8	20	1	REC: COSMETOLOGY				
REC: COSMETOLOGY	1	20	9				10	20	1	REC: COSMETOLOGY				
REC: COSMETOLOGY	1	20	11				12	20	1	REC: COSMETOLOGY				
REC: COSMETOLOGY	1	20	13				14	20	1	REC: COSMETOLOGY				
REC: COSMETOLOGY	1	20	15				16	20	1	REC: COSMETOLOGY				
REC: COSMETOLOGY	1	20	17				18	20	1	REC: COSMETOLOGY				
REC: COSMETOLOGY	1	20	19				20	19	1	REC: COSMETOLOGY				
REC: COSMETOLOGY	1	20	21				22	20	1	REC: COSMETOLOGY				
REC: COSMETOLOGY	1	20	23				24	20	1	REC: COSMETOLOGY				
EQ: EWH1	8.87	2P	25				26	20	1	REC: COSMETOLOGY				
EQ: EWH1	8.87	100	27				28	20	1	REC: COSMETOLOGY				
SPARE	0	20	29				30	20	0	SPARE				
SPARE	0	20	31				32	-	0	SPACE				
SPARE	0	20	33				34	-	0	SPACE				
SPARE	0	20	35				36	-	0	SPACE				
SPARE	0	20	37				38	3P	0	EQ: SPD				
SPARE	0	20	39				40	30	0	EQ: SPD				
SPARE	0	20	41				42	-	0	EQ: SPD				
A PH = 17.87 B PH = 17.87 C PH = 8.00														
SERVES	CONN	LOAD	FACTOR	FEED	DIVERSITY	KVAD	PANEL KVAD							
LIGHTING	0.00	x	1.25	=	0.00	x	=							
RECEPT	26.00	x	*	=	18.00	x	=							
MISC EQUIP	17.74	x	1.00	=	17.74	x	=							
A/C	0.00	x	1.00	=	0.00	x	=							
HEATING	0.00	x	1.00	=	0.00	x	=							
LARGEST MOTOR	0.00	x	1.25	=	0.00	x	=							
OTHER MOTORS	0.00	x	1.00	=	0.00	x	=							
OTHER	0.00	x	1.00	=	0.00	x	=							
SPARE														
TOTALS	43.74							71.97						

* PER N.E.C. TABLE 220.44

RISER NOTES:

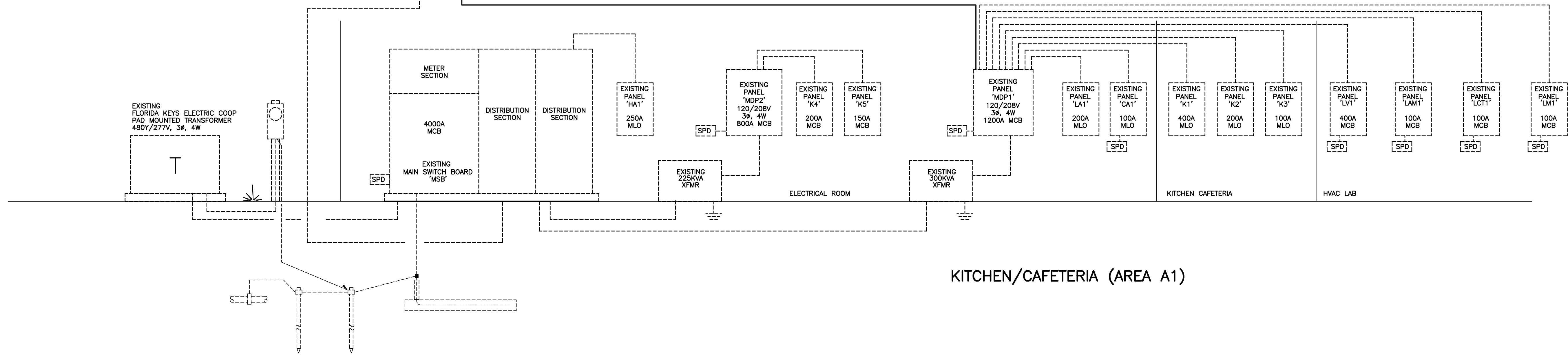
- (1) PROVIDE SURGE PROTECTION DEVICE 100,000 AMP SURGE CIRCUIT RATING, PER PHASE (L-N, L-G) 200 KAIC RATED, NON-MODULAR COMPACT DESIGN 208Y/120 VOLT, 3 PHASE, 4 WIRE. PQ PROTECTION PQC100 OR EQUAL. 3/4" C; 3-#10, 1-#10 N, 1-#10 GND.
- (2) PROVIDE NEW PANELBOARD WITH ALL COPPER BUS (A, B, C, NEUTRAL, AND GROUND BUS), NEMA 1 ENCLOSURE. PROVIDE PERMANENT PLASTIC NAMEPLATE, BOLT-ON BREAKERS. SQUARE D NOOD TYPE OR EQUAL BE GENERAL ELECTRIC OR EATON.

EXISTING PANEL 'MDP1'

PANEL: MDP1 AIC RATING: EXIST AMPS SERVICE: 120/208 V., 3PH,4W												MLO: 0 AMPS MCB: 1200 AMPS		
DESCRIPTION	KVA	BKR	CKT	A	B	C	CKT	BKR	KVA	DESCRIPTION				
E PNL K1	34	3P	1				2	3P	2.8	PNL LA1				
E PNL K1	33.3	400	3				4	200	5.2	PNL LA1				
E PNL K1	30	"	5				6	"	2	PNL LA1				
E PNL K2	18.3	3P	7				8	3P	3.7	PNL CA1				
E PNL K2	15.4	200	9				10	100	2.5	PNL CA1				
E PNL K2	16.1	"	11				12	"	2.2	PNL CA1				
E PNL K3	10.4	3P	13				14	3P	1	PNL LV1				
E PNL K3	11.6	100	15				16	400	2	PNL LV1				
E PNL K3	7.1	"	17				18	"	1	PNL LV1				
N PNL LF3	17.87	3P	19				20	-	0	SPACE				
N PNL LF3	17.87	200	21				22	-	0	SPACE				
N PNL LF3	8	"	23				24	-	0	SPACE				
E SPACE	0	-	25				26	3P	6.8	PNL LCT1				
E SPACE	0	-	27				28	100	4.2	PNL LCT1				
E SPACE	0	-	29				30	"	4.5	PNL LCT1				
E SPACE	0	-	31				32	3P	7.9	PNL LM1				
E SPACE	0	-	33				34	100	7.3	PNL LM1				
E SPACE	0	-	35				36	"	8.1	PNL LM1				
E SPACE	0	-	37				38	-	0	SPACE				
E SPACE	0	-	39				40	-	0	SPACE				
E SPACE	0	-	41				42	-	0	SPACE				
A PH = 102.77 B PH = 99.37 C PH = 79.00														
SERVES	CONN	LOAD	FACTOR	FEED	DIVERSITY	KVAD	PANEL KVAD							
LIGHTING	0.00	x	1.25	=	0.00	x	=							
RECEPT	0.00	x	*	=	0.00	x	=							
MISC EQUIP	0.00	x	1.00	=	0.00	x	=							
A/C	0.00	x	1.00	=	0.00	x	=							
HEATING	0.00	x	1.00	=	0.00	x	=							
LARGEST MOTOR	0.00	x	1.00	=	0.00	x	=							
OTHER MOTORS	281.14	x	0.72	=	202.42	x	=							
SPARE														
TOTALS	281.14							431.81						

* PER N.E.C. TABLE 220.44

ABBREVIATIONS:
 E = EXISTING CIRCUIT TO REMAIN.
 N = PROVIDE NEW BREAKER, CONDUIT AND WIRE. PROVIDE REQUIRED MOUNTING HARDWARE AND FILLER PLATES.




KITCHEN/CAFETERIA (AREA A1)

PARTIAL ELECTRICAL RISER DIAGRAM
NOT TO SCALE

REVISIONS	DATE

Coral Shores High School
Cosmetology Alterations

Monroe County School District
241 Trumbo Road - Key West, Florida 33040



BUILDING BRIDGES
TO SUCCESS

PARTIAL ELECTRICAL RISER DIAGRAM AND PANEL SCHEDULES

Anston-Greene, Inc.
Mechanical & Electrical Consulting Engineers
1115 Westchester Avenue, Tampa, FL 33612 (813) 986-9399
Florida Professional Engineer License Number 8093

AGI

DRAWN	TRG
CHECKED	RCA
DATE	04.18.2022
SCALE	AS NOTED
JOB NO.	21027
DRAWING NO.	E3.1

ROBERT C. ANSTON, P.E. 40858
 TO THE BEST OF MY KNOWLEDGE, THESE
 DRAWINGS AND THE PROJECT MANUAL ARE
 COMPLETE AND COMPLY WITH THE 2020 FLORIDA
 BUILDING CODE

Drawing File: I:\21xxx\21027\001\21027e3x.dwg E31
 Plotted by: chris Apr 16, 2022 - 8:41am